

## South Yorkshire Head

Doncaster, 10<sup>th</sup> February 2018

### Parking & Boating Arrangements

#### Vehicle & Trailer Parking

It is recommended that all vehicles approach the race site from the A630 via Greenfield Lane (except those parking in Vehicle Parking B). The arrangements for parking vehicles and trailers at this year's South Yorkshire Head are as follows:

- Trailers and their towing vehicles are to park on a designated field or on the side of the roads in Hexthorpe Park (marked in red on the map below). Several areas will be used, so follow the instructions of the marshals. Please ensure you do not block a road either with your parked vehicle or your boats on trestles. It is imperative that ambulance access to the landing stage is maintained at all times. **All vehicles travelling in the Park must observe the speed limit of 5mph and switch on both headlights and hazard warning lights.**
- Because of the tight turns, trailers will need to go around the block in Hexthorpe (left on Old Hexthorpe Road, first right on Shady Side, first right on Scarll Road and right onto Urban Road). At the first entrance to the Park, they will be directed into the Park by marshals and told where to park.
- There are a variety of options for the parking of other vehicles:
  1. Hexthorpe Park (Vehicle Parking A on the map below). There are limited spaces, so these will be allocated on a first-come-first-served basis. **Drivers are asked to make an effort to minimise damage to the grass when moving their vehicles. Under no circumstances should cars be driven over the football field.**
  2. When the Park spaces are full, visitors can either park on the local streets around the park or go to Vehicle Parking B located at the end of Oswin Avenue (see map on page 4 below). It is recommended that later arrivals use this area. Please park as instructed by a marshal. Please do not park further along the road than the "Harvest Close" street sign (next to the lamp post). The route into the Park is across the railway bridge 50 yards beyond the "Harvest Close" street sign, as shown in green on the map below. When turning around to depart, please do not enter the housing estate. When departing, it is not possible to turn right on the A630 (back to the A1(M)), so it is necessary to turn left on the A630 then follow the route shown on the "Competitor Car Parking Options" map on page 5 below.

#### Unloading & Boating Arrangements

Trailers should be parked as directed by the marshals. They can then be unloaded and the boats parked on the grass next to the football field. Please see the map below for details.

Boats can then be carried down to the boating area as required. **To facilitate rapid boating, please ensure that all oars, equipment, etc., are taken to the landing stages before boats are carried down.** In view of the distance to the

river, we recommend that crews with larger boats take trestles with them, so that they can rest en route if there is a queue.

We recommend that crews start moving their kit to the landing stages at least 20 minutes before their allocated boating time and start moving their boats 15 minutes before the boating time.

Please carry your boat along the route as shown in the attached map. Marshals may rearrange boats en route to the marshalling area, so that they boat in the correct sequence.

When de-boating after your race, please follow the return route shown on the Hexthorpe Park map below or as directed by the marshals.

Thank you for your cooperation.

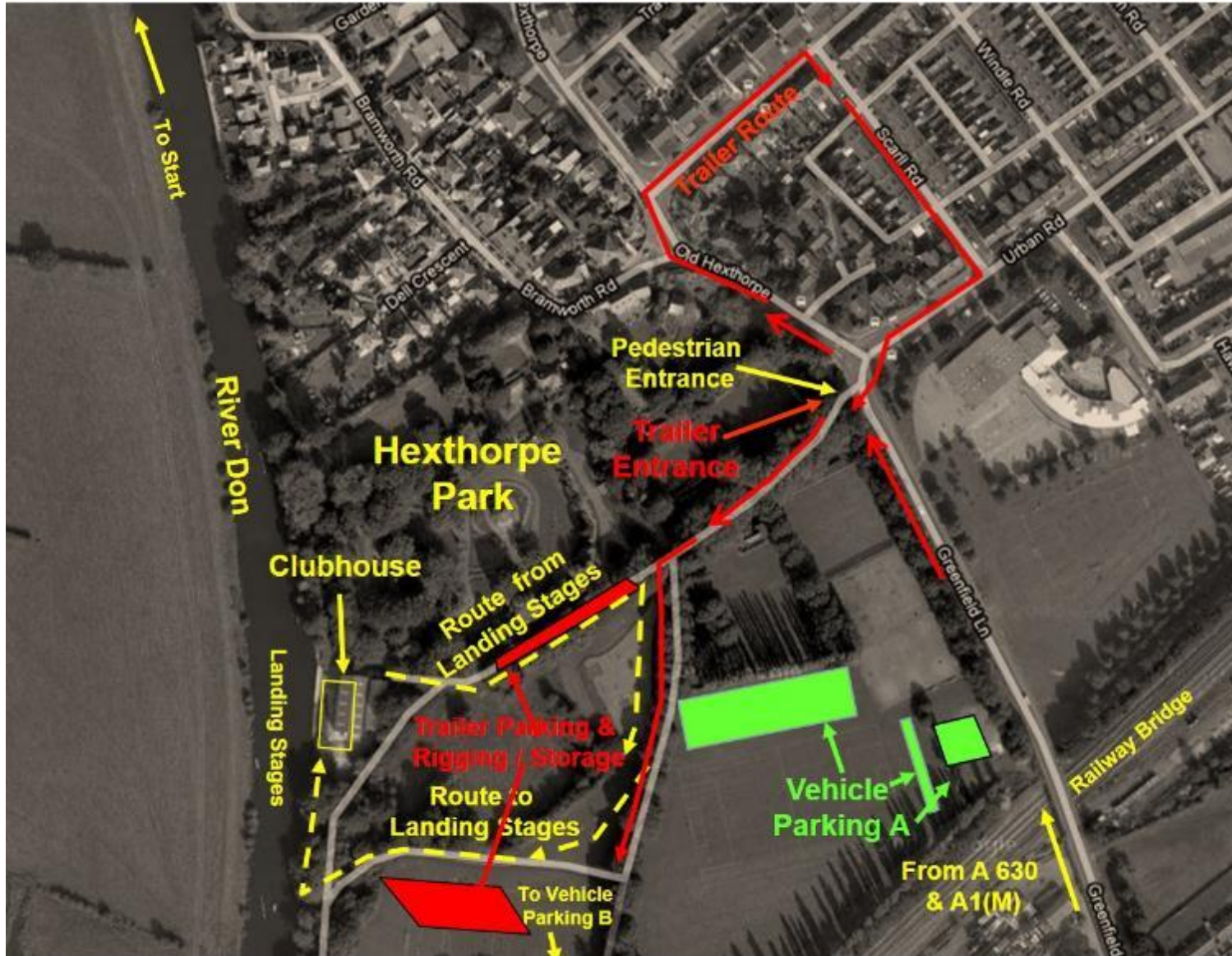
# South Yorkshire Head – 10<sup>th</sup> February 2018

## Course Details and Routes to Doncaster Rowing Club





## South Yorkshire Head Map of Hexthorpe Park, Doncaster





## South Yorkshire Head Map of Competitor Car Parking Options outside Hexthorpe Park

